
DATE: MARCH 2021

SUBJECT: TRI-COUNTY TRANSPORTATION FOR SENIORS AND/OR PERSONS WITH DISABILITIES MONTHLY PERFORMANCE REPORTS

RIDE CONNECTION

1. Overall Ridership for E&D. As of March 2021, the monthly average ridership experienced a 70% decrease compared to March 2020. Part of this change can be attributed to programs phasing out such as American Cancer Society, Dahlia, Edwards Center and Villages NW. However, most of the decrease in ridership is directly due to the global COVID-19 pandemic. March 2020 was the first month of the pandemic and subsequent lockdown, so the ridership decreases witnessed in March 2021 were far less than previous months.

Due to fewer volunteer drivers being available given the pandemic, the TriMet Volunteer programs experienced a significant decrease in the number of rides provided. Rides provided by the Urban League decreased by 75%.

2. Total Costs. Ride Connection experienced a 28% decrease in overall monthly costs in March 2021 compared to March 2020, mostly due to the pandemic. Some of the most noteworthy programs which experienced decreases in cost included the Urban League at 82%, as well as Ride Connection's TriMet Volunteer programs.

Some of the programs which experienced an increase in cost were Clackamas County Consortium's services provided for the Pioneer Senior Center (costs increased by 185%) and the Sandy Senior Center (increased by 235%), as well as a 71% increase for the DAVS program through Ride Connection's Cab Services.

3. The Network Cost Per Ride. The network-wide Cost Per Ride in March 2021 increased by 10.2% over March 2020; the cost increased to \$37.66 from \$34.18 in March 2020.

RIDEWISE

1. Service Delivery Analysis. Total number of individuals served through RideWise (one-on-one, classroom, group and trip planning by phone/mail) – 0
2. Number of individuals successfully exited out of one-on-one travel training was none. 0 of whom are prior participants returning to learn a new route. Percentage of change from March 2021– 100% decrease in the number of successful customers was noted for March 2020 due to Covid-19. RideWise has provided 15 virtual school safety and transit skills presentations to 177 students in March. 9 customers received 9.25 hours of virtual transit support.
3. Number of individuals successfully exited out of one-on-one travel training under the age of 60 was 0. Average training hours per individual trained one-on-one during March 2019– 0 due to Covid-19.
4. Outreach. The RideWise program continues to increase awareness of the program by attending resource fairs, meeting with agency professionals, mailings, and presentations at staff meetings, etc.
Number of events: 1
Presentations/events:
 - Community Pathways- virtual all staff presentation
5. Ride Ambassador Program. No volunteer hours were recorded for Rider's Club events, committee meetings, and outreach due to Covid-19.
6. Riders' Clubs. The RideWise program supported 0 Rider's Club activities with 0 participants due to Covid-19.
7. Referral Sources. There were 11 referrals in March 2021. One referral was from new agencies or new sources at agencies with which a relationship has already been established, 1 referral was the result of our travel options counseling efforts.
8. School Program. No students received individual training during the month of March due to Covid-19. There were 0 trips taken as a group, 0 one-on-one trips. 0 teachers and support staff reported 0 hours of training due to Covid-19.

RideWise Performance Report - March 2021

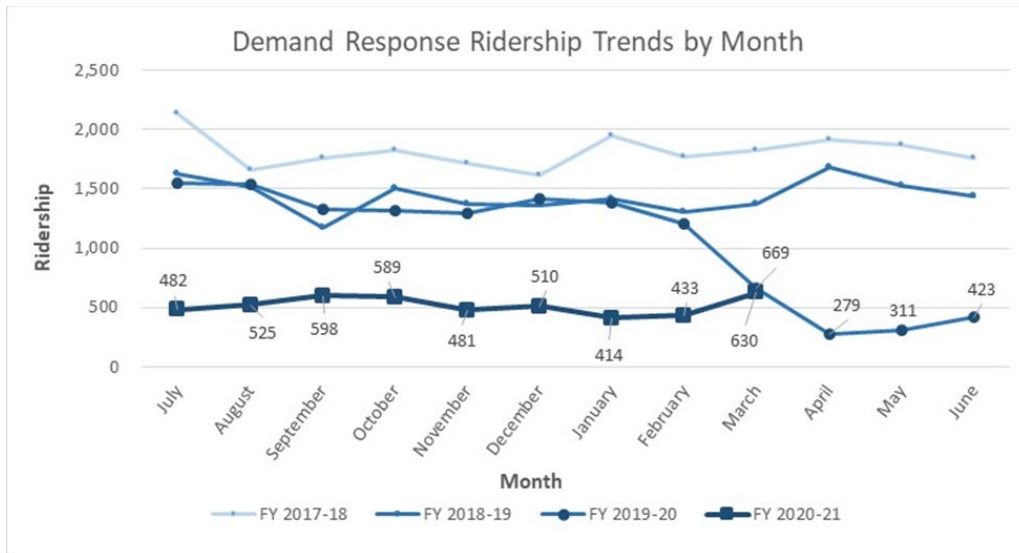
	Number Served	Expected trips per week by unduplicated individuals	Expected annual trips	Annual avoided cost		
One-on-one travel training						
One-on-one travel training work trips	0		-	\$0.00		
One-on-one travel training general trips	0		-	\$0.00		
Subtotal	-	-	-	\$0.00		
Group travel trainings						
Group travel trainings with schools	177		646	\$21,538.18		
Group travel training general	0		-	\$0.00		
Riders Club participants	0					
Subtotal	177		646	\$21,538.18		
Total	177	-	646	\$21,538.18		
Supportive services support of travel training	Staff	Total number of students in training	Number of students trained 1-on-1	Number of trips taken with students 1-on-1	Number of trips taken with groups of students	Total hours spent training 1-on-1 and with groups of students
New supportive service contacts sites	3					
Transitional staff support only	1					
Transitional staff support and pass plan	5		0	0		
Total	9	-	-	-	-	-
Ride Connection RideWise monthly costs:						
RideWise RC program monthly cost	\$10,778.97					
Ride Ambassador hours monthly	\$0.00					
Value of volunteer hours monthly	\$0.00					
Value of transitional staff hours monthly	\$0.00					

SANDY AREA METRO (SAM)

1. With 7,126 passengers in March, ridership was 7% lower than last March when COVID became a reality and ridership and bus capacity decreased. This is a 34% reduction in ridership compared to pre-COVID ridership trends. 34% is one of the lowest reductions we have seen in months, likely due to the COVID restrictions being lifted in many aspects of society and schools reopening to hybrid learning.
2. SAM-Gresham provided 7,126 rides, only a 7.2% decrease from last March. Estacada had an 8.5% increase from last year with 637 rides. The Shopper Shuttle had a decrease of 18.9% with 485 rides.
3. SAM rides increased by 13.3% with March ridership totaling 854. ED also increased by 57.6%.
4. During the month of March, SAM staff were able to sign a contract and move forward with new dispatch software. This new software will help with scheduling and mapping rides on the SAM *rides* dial-a-ride service. EasyRides, the new software, will bring much needed updates to the capabilities of our dial-a-ride software such as automated reminder calls the evening before their scheduled ride.

SOUTH METRO AREA REGIONAL TRANSIT (SMART)

1. Ridership for both fixed route and Dial-a-Ride have hit their highest levels since March of last year. We expect to see numbers stay consistent at current levels until state and local policies related to the COVID-19 pandemic are ended. Dial-a-Ride may see more significant increases as SMART provides service to vaccination locations.
2. SMART has partnered with Metro, PBOT, and Safe Routes to School programs to market a new campaign that reminds drivers of their role in keeping kids safe in our neighborhoods.



CANBY AREA TRANSIT (CAT)

1. March of the prior year was at the start of the pandemic. Ridership numbers from the end of the pandemic are now beginning to rise over the start of the pandemic though still significantly below normal.
2. During the month of March total CAT ridership was down by -4.42% from the previous year. During the same time period Demand Responsive trips rose 3.43% and fixed-route was down -5.66%.
3. CAT continues to operate full services during the COVID-19 pandemic. Bus capacity has been decreased to accommodate social distancing policies and policies including regularly cleaning and mandatory masks have been implemented.
4. During the month of March CAT charged no fares on fixed route or Dial-a-Ride.
5. In March CAT provided 324 Saturday rides on both fixed-route and Demand Response. These rides are paid for with STIF revenue.

SOUTH CLACKAMAS TRANSIT DISTRICT (SCTD)

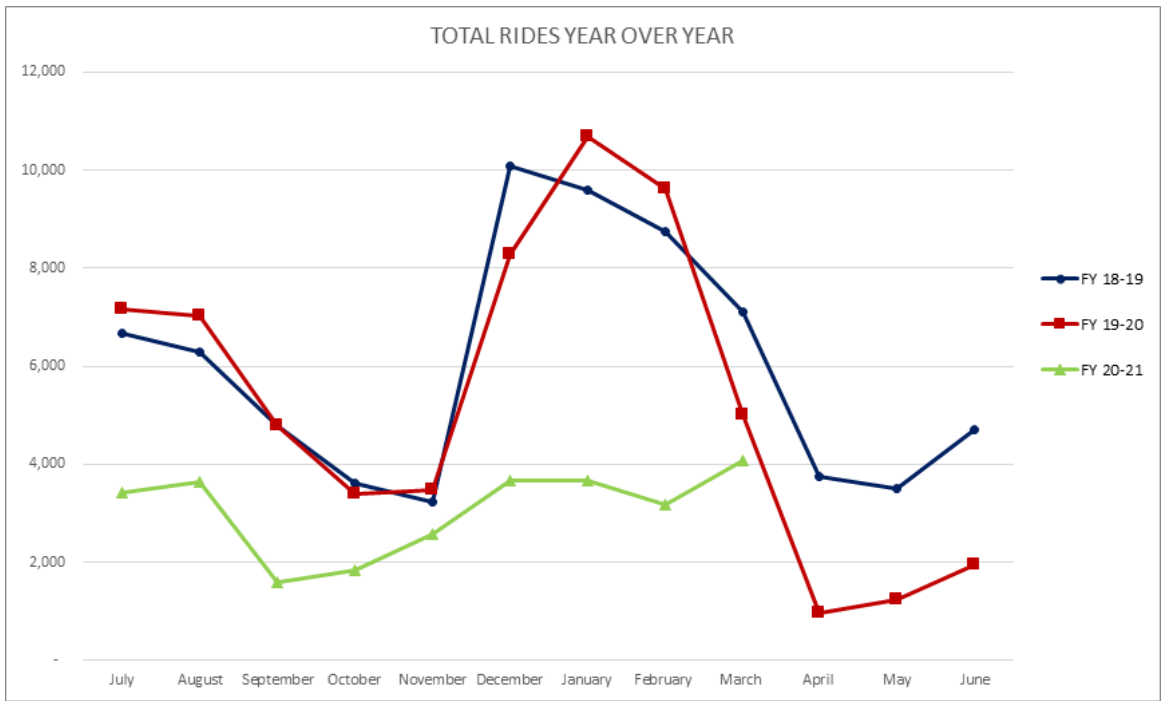
1. SCTD has continued to maintain service hours from pre-Covid-19 levels. Bus capacity has been decreased to comply with the State of Oregon's social distancing regulations, and other precautions have been maintained to limit the spread of COVID, such as face covering requirements,

providing hand sanitizers for customers, nightly disinfecting of vehicles, and plexiglass shields to help protect drivers.

2. Total SCTD system ridership in March 2021 was up compared to the previous month, by 27%. In total SCTD provided 2,515 rides for the month, with the Clackamas Community College route providing over 63% of all rides.
3. Elderly and disabled ridership was up in March over the prior month, by 28%, with 417 rides for the month.
4. Saturday service provided an average of 47 rides per day. For our city route, 29% of the total Saturday rides on this service were taken by E&D riders.
5. During March, SCTD continued to not charge fares on all three routes, due to COVID-19.

MT. HOOD EXPRESS

1. Ridership numbers have continued to increase over the winter season, and were only down 18.42% year over year for the month of March.
2. As we move into Spring (our lowest ridership time of the year), we are hoping our ridership levels stabilize and more closely match our FY2018-2019 ridership numbers.
3. If ridership stabilizes and we continue to have capacity issues, CARES funding can be used to ensure service matches the demand and we will make adjustments to the schedule and number of buses appropriately for both the Mt Hood Express and Village shuttle services.
4. Driver barriers have been installed in all vehicles and more permanent barriers are being added to the last of the older buses over the next few months.
5. The Mt Hood Express and Village Shuttle services remain fare free at this time.



TRIMET

1. System Ridership Summary for Fiscal Year to date (next page).

TRIMET-SYSTEM RIDERSHIP SUMMARY

Measure	Mar 21	Mar 20	% Change	FY21-TD	FY20-TD	% Change
Avg Weekday Boardings						
<u>Fixed Route</u>						
Bus-Other Service	25,900	47,700	-45.7%	24,801	82,710	-70.0%
Bus-Frequent Service*	<u>51,650</u>	<u>77,700</u>	-33.5%	<u>49,351</u>	<u>96,720</u>	-49.0%
Subtotal All Bus	77,550	125,400	-38.2%	74,152	179,430	-58.7%
MAX	43,960	76,900	-42.8%	43,403	113,980	-61.9%
Commuter Rail	<u>305</u>	<u>820</u>	-62.8%	<u>327</u>	<u>1,320</u>	-75.3%
Fixed Route Total	121,815	203,100	-40.0%	117,882	294,730	-60.0%
<u>Paratransit</u>						
LIFT& Cabs	900	1,801	-50.0%	818	3,071	-73.4%
System Total	122,715	204,861	-40.1%	118,700	297,801	-60.1%

Avg Weekly Boardings

<u>Fixed Route</u>						
Bus-Other Service	154,200	271,400	-43.2%	146,808	476,888	-69.2%
Bus-Frequent Service*	<u>331,700</u>	<u>485,800</u>	-31.7%	<u>318,154</u>	<u>599,658</u>	-46.9%
Subtotal All Bus	485,900	757,200	-35.8%	464,962	1,076,546	-56.8%
MAX	287,900	477,400	-39.7%	282,103	704,669	-60.0%
Commuter Rail	<u>1,525</u>	<u>4,100</u>	-62.8%	<u>1,633</u>	<u>6,625</u>	-75.3%
Fixed Route Total	775,365	1,238,720	-37.4%	748,699	1,787,839	-58.1%
Frequent Bus % of Total Bus	68.3%	64.2%	4.1%	68.4%	55.7%	12.7%
<u>Paratransit</u>						
LIFT & Cabs	5,435	10,255	-47.0%	4,943	17,461	-71.7%
System Total	780,800	1,248,975	-37.5%	753,642	1,805,300	-58.3%

Operations Cost / Boarding Ride **

<u>Fixed Route</u>						
Bus-Other Service	\$11.34	\$7.43	52.62%	\$12.59	\$5.02	150.80%
Bus-Frequent Service*	\$7.10	\$4.86	46.09%	\$7.97	\$3.61	120.78%
Subtotal All Bus	\$8.45	\$5.78	46.19%	\$9.40	\$4.22	122.75%
MAX	\$8.32	\$6.51	27.80%	\$8.67	\$3.74	131.82%
Commuter Rail	\$94.51	\$31.74	197.76%	\$92.03	\$23.00	300.13%
Fixed Route Total	\$8.58	\$6.15	39.51%	\$9.30	\$4.10	126.83%
<u>Paratransit</u>						
LIFT & Cabs	\$79.38	\$56.70	40.00%	\$85.08	\$43.53	95.45%
System Total	\$9.07	\$6.56	38.26%	\$9.79	\$4.47	119.02%

* Frequent Bus lines are those operating at headways of 15 minutes or less.

TK

All other bus lines, plus special services are included under "Other Bus Services".

** Operations Cost: Expenses for labor, energy and expendable supplies required to provide transit service and maintain vehicles and plant facilities. Does not include General and Administrative, interest or depreciation.

i

TRIMET - RIDE CONNECTION ELDERLY AND DISABLED TRANSPORTATION REPORT

12-Month Averages

TRIMET	Mar 2021	Mar 2020	% Change	Current Year	Previous Year	% Change
Bus						
Monthly Rides	2,176,330	3,343,210	-34.9%	1,916,612	4,710,065	-59.3%
Monthly Cost	\$18,387,327	\$19,320,336	-4.8%	\$18,812,409	\$19,783,562	-4.9%
Monthly Vehicle Mile	2,114,025	2,323,502	-9.0%	1,973,991	2,245,921	-12.1%
On-Time Performance	93.9%	92.7%	1.2%	94.0%	86.9%	7.1%
Cost per Ride	\$8.45	\$5.78	46.2%	\$9.82	\$4.20	133.8%
Cost per Mile	\$8.70	\$8.32	4.6%	\$9.53	\$8.81	8.2%
Miles per Roadcall	12,363	16,716	-26.0%	15,382	16,565	-7.1%
Light Rail (MAX)						
Monthly Rides	1,283,560	2,109,450	-39.2%	1,197,149	3,115,033	-61.6%
Monthly Cost	\$10,683,892	\$13,735,023	-22.2%	\$10,832,734	\$11,182,007	-3.1%
Monthly Vehicle Mile	355,035	393,049	-9.7%	349,639	386,865	-9.6%
On-Time Performance	89.6%	91.8%	-2.2%	90.5%	89.8%	0.7%
Cost per Ride	\$8.32	\$6.51	27.8%	\$9.05	\$3.59	152.1%
Cost per Mile	\$30.09	\$34.94	-13.9%	\$30.98	\$28.90	7.2%
Miles per Roadcall	4,672	5,459	-14.4%	5,724	5,818	-1.6%
Commuter Rail (WES)						
Monthly Rides	7,015	18,040	-61.1%	6,730	28,984	-76.8%
Monthly Costs	\$663,019	\$572,628	15.8%	\$618,199	\$611,927	1.0%
Monthly Vehicle Mile	6,762	10,349	-34.7%	6,298	9,983	-36.9%
On Time Performance	99.2%	100.0%	-0.8%	98.0%	96.7%	1.3%
Cost per Ride	\$94.51	\$31.74	197.8%	\$91.86	\$21.11	335.1%
Cost per Mile	\$98.05	\$55.33	77.2%	\$98.16	\$61.30	60.1%
Miles per Roadcall	6,762	10,349	-34.7%	4,723	23,958	-80.3%
Paratransit LIFT and Cab						
Monthly Rides	24,272	45,219	-46.3%	19,716	76,362	-74.2%
Monthly Cost	\$1,939,115	\$2,563,819	-24.4%	\$1,700,639	\$3,221,302	-47.2%
Monthly Vehicle Mile	291,191	426,592	-31.7%	243,551	653,566	-62.7%
On-Time Performance	93.0%	93.3%	-0.3%	95.8%	89.6%	6.2%
Cost per Ride	\$79.89	\$56.70	40.9%	\$86.26	\$42.18	104.5%
Cost per Mile	\$6.66	\$6.01	10.8%	\$6.98	\$4.93	41.6%
Miles per Roadcall	2,157	6,273	-65.6%	2,255	5,875	-61.6%

RIDE CONNECTION*	Mar 2021	Mar 2020	% Change	12-Month Averages		
				Current Year	Previous Year	% Change
Monthly Rides	10,902	16,747	-34.9%	9,256	30,389	-69.5%
Monthly Cost	\$410,555	\$572,392	-28.3%	\$443,312	\$637,770	-30.5%
Monthly Vehicle Mile	76,329	78,995	-3.4%	56,462	121,159	-53.4%
New Riders This Month	467	502	-7.0%	762.4	1,133.8	-32.8%
Cost per Ride	\$37.66	\$34.18	10.2%	\$47.89	\$20.99	128.2%
Cost per Mile	\$5.38	\$7.25	-25.8%	\$7.85	\$5.26	49.2%
Miles per Ride	7.0	4.7	48.9%	6.1	4.0	52.5%

*Excludes Mt. Hood Express Service and Rural Transit District Transportation

Monday, June 7, 2021

TriMet and Ride Connection - Summary

RIDE CONNECTION RED - PROVIDER(1)

12-Month Averages

Programs	Mar 2021	Mar 2020	% Change	Current Year	Pervious Year	% Change
Central Beaverton						
Monthly Rides	80	585	-86.3%	346	1,062	-67.4%
Monthly Cost	\$2,741	\$15,713	-82.6%	\$12,946	\$18,770	-31.0%
Monthly Vehicle Mile	471	3,574	-86.8%	2,500	5,550	-55.0%
New Riders This Month	25	29	-13.8%	40.0	73.4	-45.5%
Cost per Ride	\$34.26	\$26.86	27.6%	\$37.42	\$17.67	111.8%
Cost per Mile	\$5.82	\$4.40	32.3%	\$5.18	\$3.38	53.3%
Miles per Ride	5.9	6.1	-3.3%	7.2	5.2	38.5%
King City Shuttle						
Monthly Rides	59	156	-62.2%	123	308	-60.1%
Monthly Cost	\$1,824	\$8,166	-77.7%	\$6,685	\$8,972	-25.5%
Monthly Vehicle Mile	279	1,304	-78.6%	915	1,644	-44.3%
New Riders This Month	13	5	160.0%	15.7	21.6	-27.3%
Cost per Ride	\$30.91	\$52.35	-41.0%	\$54.31	\$29.14	86.4%
Cost per Mile	\$6.54	\$6.26	4.5%	\$7.30	\$5.46	33.7%
Miles per Ride	4.7	8.4	-44.0%	7.4	5.3	39.6%
Title XIX Non Medical						
Monthly Rides	0	72	-100.0%	7	112	-93.8%
Monthly Cost	\$0	\$4,520	-100.0%	\$1,441	\$5,168	-72.1%
Monthly Vehicle Mile	0	757	-100.0%	78	1,200	-93.5%
New Riders This Month	0	6	-100.0%	1.3	12.4	-89.5%
Cost per Ride	N/A	\$62.77	N/A	\$194.31	\$45.97	322.7%
Cost per Mile	N/A	\$5.97	N/A	\$18.44	\$4.31	327.8%
Miles per Ride	N/A	10.5	N/A	10.5	10.7	-1.9%
STF Service						
Monthly Rides	44	282	-84.4%	289	483	-40.2%
Monthly Cost	\$1,485	\$10,542	-85.9%	\$12,188	\$12,267	-0.6%
Monthly Vehicle Mile	217	2,298	-90.6%	2,531	2,557	-1.0%
New Riders This Month	14	20	-30.0%	33.3	40.8	-18.4%
Cost per Ride	\$33.74	\$37.38	-9.7%	\$42.12	\$25.42	65.7%
Cost per Mile	\$6.84	\$4.59	49.0%	\$4.82	\$4.80	0.4%
Miles per Ride	4.9	8.1	-39.5%	8.7	5.3	64.2%
TriMet ADS						
Monthly Rides	0	0	N/A	0	0	N/A
Monthly Cost	\$0	\$0	N/A	\$0	\$0	N/A
Monthly Vehicle Mile	0	0	N/A	0	0	N/A
New Riders This Month	0	0	N/A	0.0	0.0	N/A
Cost per Ride	N/A	N/A	N/A	N/A	N/A	N/A
Cost per Mile	N/A	N/A	N/A	N/A	N/A	N/A
Miles per Ride	N/A	N/A	N/A	N/A	N/A	N/A
TriMet Service						
Monthly Rides	0	30	-100.0%	9	109	-91.7%
Monthly Cost	\$0	\$2,192	-100.0%	\$716	\$2,573	-72.2%
Monthly Vehicle Mile	0	190	-100.0%	99	600	-83.5%
New Riders This Month	0	2	-100.0%	2.4	11.7	-79.5%
Cost per Ride	N/A	\$73.08	N/A	\$77.37	\$23.72	226.2%
Cost per Mile	N/A	\$11.54	N/A	\$7.25	\$4.29	69.0%
Miles per Ride	N/A	6.3	N/A	10.7	5.5	94.5%

CAB SERVICES - PROVIDER

12-Month Averages

Programs	Mar 2021	Mar 2020	% Change	Current Year	Previous Year	% Change
Dialysis						
Monthly Rides	0	0	N/A	0.0	0	N/A
Monthly Cost	\$0	\$0	N/A	\$0	\$0	N/A
Monthly Vehicle Mile	0	0	N/A	0	0	N/A
New Riders This Month	0	0	N/A	0.0	0.0	N/A
Cost per Ride	N/A	N/A	N/A	N/A	N/A	N/A
Cost per Mile	N/A	N/A	N/A	N/A	N/A	N/A
Miles per Ride	N/A	N/A	N/A	N/A	N/A	N/A
General Public						
Monthly Rides	202	497	-59.4%	281	692	-59.4%
Monthly Cost	\$8,518	\$15,793	-46.1%	\$11,229	\$20,528	-45.3%
Monthly Vehicle Mile	1,723	4,268	-59.6%	2,521	5,807	-56.6%
New Riders This Month	5	4	25.0%	7	19	-63.2%
Cost per Ride	\$42.17	\$31.78	32.7%	\$39.96	\$29.69	34.6%
Cost per Mile	\$4.94	\$3.70	33.5%	\$4.45	\$3.53	26.1%
Miles per Ride	8.5	8.6	-1.2%	9.0	8.4	7.1%
Multnomah Co. ADS Premium						
Monthly Rides	18	111	-83.8%	14	224	-93.8%
Monthly Cost	\$574	\$1,700	-66.2%	\$435	\$4,138	-89.5%
Monthly Vehicle Mile	84	193	-56.5%	84	712	-88.2%
New Riders This Month	2	4	-50.0%	1	13	-92.3%
Cost per Ride	\$31.89	\$15.32	108.2%	\$30.37	\$18.50	64.2%
Cost per Mile	\$6.83	\$8.81	-22.5%	\$5.16	\$5.82	-11.3%
Miles per Ride	4.7	1.7	176.5%	5.9	3.2	84.4%
STF Service						
Monthly Rides	641	908	-29.4%	862	757	13.9%
Monthly Cost	\$20,986	\$20,811	0.8%	\$25,948	\$17,128	51.5%
Monthly Vehicle Mile	3,075	4,464	-31.1%	4,068	3,462	17.5%
New Riders This Month	71	110	-35.5%	116	114	1.8%
Cost per Ride	\$32.74	\$22.92	42.8%	\$30.12	\$22.63	33.1%
Cost per Mile	\$6.82	\$4.66	46.4%	\$6.38	\$4.95	28.9%
Miles per Ride	4.8	4.9	-2.0%	4.7	4.6	2.2%
Title XIX Non Medical						
Monthly Rides	130	779	-83.3%	209	1,439	-85.5%
Monthly Cost	\$4,023	\$18,862	-78.7%	\$5,445	\$33,055	-83.5%
Monthly Vehicle Mile	487	3,788	-87.1%	714	7,121	-90.0%
New Riders This Month	12	21	-42.9%	15	71	-78.9%
Cost per Ride	\$30.95	\$24.21	27.8%	\$26.07	\$22.97	13.5%
Cost per Mile	\$8.26	\$4.98	65.9%	\$7.62	\$4.64	64.2%
Miles per Ride	3.7	4.9	-24.5%	3.4	4.9	-30.6%
Wa Co DAVS						
Monthly Rides	87	96	-9.4%	74	160	-53.8%
Monthly Cost	\$3,958	\$2,313	71.1%	\$2,585	\$4,500	-42.6%
Monthly Vehicle Mile	756	557	35.7%	503	1,122	-55.2%
New Riders This Month	11	8	37.5%	9	17	-47.1%
Cost per Ride	\$45.49	\$24.09	88.8%	\$35.13	\$28.17	24.7%
Cost per Mile	\$5.23	\$4.15	26.0%	\$5.14	\$4.01	28.2%
Miles per Ride	8.7	5.8	50.0%	6.8	7.0	-2.9%

CLACKAMAS COUNTY CONSORTIUM - PROVIDER

12-Month Averages

Programs	Mar 2021	Mar 2020	% Change	Current Year	Previous Year	% Change
Canby Senior Center						
Monthly Rides	24	83	-71.1%	17	292	-94.2%
Monthly Cost	\$210	\$749	-72.0%	\$160	\$2,651	-94.0%
Monthly Vehicle Mile	244	296	-17.6%	86	684	-87.4%
New Riders This Month	4	0	N/A	1.0	12.9	-92.2%
Cost per Ride	\$8.75	\$9.03	-3.1%	\$9.18	\$9.09	1.0%
Cost per Mile	\$0.86	\$2.53	-66.0%	\$1.86	\$3.88	-52.1%
Miles per Ride	10.2	3.6	183.3%	4.9	2.3	113.0%
Estacada Senior Center						
Monthly Rides	210	152	38.2%	110	245	-55.1%
Monthly Cost	\$1,741	\$1,298	34.1%	\$930	\$2,114	-56.0%
Monthly Vehicle Mile	497	298	66.8%	172	512	-66.4%
New Riders This Month	6	2	200.0%	0.5	4.9	-89.8%
Cost per Ride	\$8.29	\$8.54	-2.9%	\$8.47	\$8.62	-1.7%
Cost per Mile	\$3.50	\$4.36	-19.7%	\$5.42	\$4.13	31.2%
Miles per Ride	2.4	2.0	20.0%	1.6	2.1	-23.8%
Gladstone Senior Center						
Monthly Rides	0	86	-100.0%	78	194	-59.8%
Monthly Cost	\$0	\$885	-100.0%	\$682	\$1,944	-64.9%
Monthly Vehicle Mile	0	132	-100.0%	47	436	-89.2%
New Riders This Month	0	0	N/A	0.6	10.9	-94.5%
Cost per Ride	N/A	\$10.28	N/A	\$8.72	\$10.03	-13.1%
Cost per Mile	N/A	\$6.70	N/A	\$14.44	\$4.46	223.8%
Miles per Ride	N/A	1.5	N/A	0.6	2.3	-73.9%
Hoodland Senior Center						
Monthly Rides	43	27	59.3%	23	110	-79.1%
Monthly Cost	\$2,244	\$2,232	0.5%	\$1,141	\$3,315	-65.6%
Monthly Vehicle Mile	1,036	524	97.8%	611	1,487	-58.9%
New Riders This Month	0	0	N/A	0.5	2.8	-82.1%
Cost per Ride	\$52.19	\$82.68	-36.9%	\$50.73	\$30.02	69.0%
Cost per Mile	\$2.17	\$4.26	-49.1%	\$1.87	\$2.23	-16.1%
Miles per Ride	24.1	19.4	24.2%	27.2	13.5	101.5%
Lake Oswego Adult Comm. Center						
Monthly Rides	20	137	-85.4%	33	245	-86.5%
Monthly Cost	\$165	\$1,152	-85.7%	\$275	\$2,078	-86.8%
Monthly Vehicle Mile	10	194	-94.8%	45	578	-92.2%
New Riders This Month	0	0	N/A	0.0	5.6	-100.0%
Cost per Ride	\$8.25	\$8.41	-1.9%	\$8.27	\$8.48	-2.5%
Cost per Mile	\$16.50	\$5.94	177.8%	\$6.15	\$3.60	70.8%
Mile per Ride	0.5	1.4	-64.3%	1.3	2.4	-45.8%

CLACKAMAS COUNTY CONSORTIUM - PROVIDER

12-Month Averages

Programs	Mar 2021	Mar 2020	% Change	Current Year	Previous Year	% Change
Milwaukie Senior Center						
Monthly Rides	0	271	-100.0%	0	705	-100.0%
Monthly Cost	\$0	\$3,301	-100.0%	\$0	\$7,885	-100.0%
Monthly Vehicle Mile	0	605	-100.0%	0	1,522	-100.0%
New Riders This Month	0	2	-100.0%	0.0	22.8	-100.0%
Cost per Ride	N/A	\$12.18	N/A	N/A	\$11.19	N/A
Cost per Mile	N/A	\$5.46	N/A	N/A	\$5.18	N/A
Miles per Ride	N/A	2.2	N/A	N/A	2.2	N/A
Molalla Senior Center						
Monthly Rides	83	177	-53.1%	42	390	-89.2%
Monthly Cost	\$985	\$2,689	-63.4%	\$459	\$5,076	-91.0%
Monthly Vehicle Mile	355	521	-31.9%	136	959	-85.8%
New Riders This Month	5	1	400.0%	2.0	10.4	-80.8%
Cost per Ride	\$11.87	\$15.19	-21.9%	\$10.90	\$13.01	-16.2%
Cost per Mile	\$2.78	\$5.16	-46.1%	\$3.37	\$5.29	-36.3%
Miles per Ride	4.3	2.9	48.3%	3.2	2.5	28.0%
Pioneer Senior Center						
Monthly Rides	686	233	194.4%	318	676	-53.0%
Monthly Cost	\$6,059	\$2,129	184.7%	\$2,710	\$6,362	-57.4%
Monthly Vehicle Mile	643	664	-3.2%	157	1,798	-91.3%
New Riders This Month	8	0	N/A	1.6	20.5	-92.2%
Cost per Ride	\$8.83	\$9.14	-3.4%	\$8.52	\$9.41	-9.5%
Cost per Mile	\$9.42	\$3.21	193.5%	\$17.29	\$3.54	388.4%
Miles per Ride	0.9	2.8	-67.9%	0.5	2.7	-81.5%
Sandy Senior Center						
Monthly Rides	284	88	223.8%	179	269	-33.5%
Monthly Cost	\$5,763	\$1,723	234.5%	\$2,019	\$2,935	-31.2%
Monthly Vehicle Mile	6,373	741	760.1%	800	1,270	-37.0%
New Riders This Month	3	0	N/A	1.4	8.5	-83.5%
Cost per Ride	\$20.29	\$19.64	3.3%	\$11.31	\$10.90	3.8%
Cost per Mile	\$0.90	\$2.32	-61.2%	\$2.52	\$2.31	9.1%
Miles per Ride	22.4	8.4	166.7%	4.5	4.7	-4.3%
Transportation Reaching People						
Monthly Rides	665	802	-17.1%	417	1,620	-74.3%
Monthly Cost	\$33,544	\$48,781	-31.2%	\$28,516	\$41,128	-30.7%
Monthly Vehicle Mile	6,570	3,218	104.2%	3,290	11,829	-72.2%
New Riders This Month	30	14	114.3%	20.3	44.3	-54.2%
Cost per Ride	\$50.44	\$60.82	-17.1%	\$68.33	\$25.39	169.1%
Cost per Mile	\$5.11	\$15.16	-66.3%	\$8.67	\$3.48	149.1%
Miles per Ride	9.9	4.0	147.5%	7.9	7.3	8.2%
Transp Reaching People-School/Work(1)						
Monthly Rides	6	28	-78.6%	1	50	-98.0%
Monthly Cost	\$514	\$2,319	-77.8%	\$44	\$1,056	-95.8%
Monthly Vehicle Mile	76	362	-79.1%	6	548	-98.9%
New Riders This Month	0	0	N/A	0	0	N/A
Cost per Ride	\$85.70	\$82.81	3.5%	\$88.35	\$20.99	320.9%
Cost per Mile	\$6.78	\$6.40	5.9%	\$6.99	\$1.93	262.2%
Miles per Ride	12.6	12.9	-2.3%	12.6	10.9	15.6%

(1) This program replaced the discontinued JARC, effective July 2014.

EAST COUNTY OFFICE - PROVIDER

12-Month Averages

Programs	Mar 2021	Mar 2020	% Change	Current Year	Pervious Year	% Change
Cherry Blossom						
Monthly Rides	0	0	N/A	0	15	-100.0%
Monthly Cost	\$0	\$0	N/A	\$5	\$201	-97.5%
Monthly Vehicle Mile	0	0	N/A	1	29	-96.6%
New Riders This Month	0	0	N/A	0.1	1.8	-94.4%
Cost per Ride	N/A	N/A	N/A	\$65.38	\$13.19	395.7%
Cost per Mile	N/A	N/A	N/A	\$5.45	\$6.94	-21.5%
Miles per Ride	N/A	N/A	N/A	12.0	1.9	531.6%
Multnomah Co. ADS Premium						
Monthly Rides	3	2	50.0%	0	2	-100.0%
Monthly Cost	\$0	\$28	-100.0%	(\$3)	\$46	-106.5%
Monthly Vehicle Mile	19	8	137.5%	2	11	-81.8%
New Riders This Month	1	1	0.0%	0.2	0.9	-77.8%
Cost per Ride	0	\$13.89	-100.0%	(\$9.60)	\$30.98	-131.0%
Cost per Mile	\$0.00	\$3.47	-100.0%	(\$1.42)	\$4.10	-134.6%
Miles per Ride	6.3	4.0	57.5%	6.8	7.6	-10.5%
STF Discretionary						
Monthly Rides	140	191	-26.7%	108	284	-62.0%
Monthly Cost	\$462	\$6,052	-92.4%	\$3,644	\$6,939	-47.5%
Monthly Vehicle Mile	996	608	63.8%	692	947	-26.9%
New Riders This Month	8	15	-46.7%	13.2	20.4	-35.3%
Cost per Ride	\$3.29	\$31.62	-89.6%	\$33.64	\$24.44	37.6%
Cost per Mile	\$0.46	\$9.95	-95.4%	\$5.26	\$7.33	-28.2%
Miles per Ride	7.1	3.2	121.9%	6.4	3.3	93.9%
STF Service						
Monthly Rides	328	447	-26.6%	253	594	-57.4%
Monthly Cost	\$1,078	\$14,121	-92.4%	\$8,503	\$12,226	-30.5%
Monthly Vehicle Mile	2,324	1,420	63.7%	1,615	1,971	-18.1%
New Riders This Month	18	36	-50.0%	30.7	38.2	-19.6%
Cost per Ride	\$3.29	\$31.62	-89.6%	\$33.64	\$20.58	63.5%
Cost per Mile	\$0.46	\$9.95	-95.4%	\$5.26	\$6.20	-15.2%
Miles per Ride	7.1	3.2	121.9%	6.4	3.3	93.9%
TriMet Service						
Monthly Rides	80	1,239	-93.5%	61	2,417	-97.5%
Monthly Cost	\$0	\$2,331	-100.0%	\$1,448	\$4,959	-70.8%
Monthly Vehicle Mile	818	2,456	-66.7%	700	4,107	-83.0%
New Riders This Month	18	6	200.0%	10.9	17.6	-38.1%
Cost per Ride	\$0.00	\$1.88	-100.0%	\$23.67	\$2.05	1054.6%
Cost per Mile	\$0.00	\$0.95	-100.0%	\$2.07	\$1.21	71.1%
Miles per Ride	10.2	2.0	410.0%	11.4	1.7	570.6%
Veterans Volunteers						
Monthly Rides	48	83	-42.2%	38	195	-80.5%
Monthly Cost	\$0	\$556	-100.0%	\$523	\$1,256	-58.4%
Monthly Vehicle Mile	591	926	-36.2%	489	1,971	-75.2%
New Riders This Month	6	4	50.0%	6.0	12.1	-50.4%
Cost per Ride	\$0.00	\$6.70	-100.0%	\$13.91	\$6.43	116.3%
Cost per Mile	\$0.00	\$0.60	-100.0%	\$1.07	\$0.64	67.2%
Miles per Ride	12.3	11.2	9.8%	13.0	10.1	28.7%

INDIVIDUAL PROVIDER - PROGRAM				12-Month Averages		
Provider - Program	Mar 2021	Mar 2020	% Change	Current Year	Previous Year	% Change
African American - N/NE Shuttle (Financial Only)						
Monthly Cost	\$0	\$0	N/A	\$0	\$357	-100.0%
David's Harp - STF Service						
Monthly Rides	0	69	-100.0%	8	168	-95.2%
Monthly Cost	\$0	\$342	-100.0%	\$709	\$1,167	-39.2%
Monthly Vehicle Mile	0	74	-100.0%	48	195	-75.4%
New Riders This Month	0	0	N/A	0.0	5.5	-100.0%
Cost per Ride	N/A	\$4.96	N/A	\$92.50	\$6.97	1227.1%
Cost per Mile	N/A	\$4.62	N/A	\$14.85	\$5.99	147.9%
Miles per Ride	N/A	1.1	N/A	6.2	1.2	416.7%
NW Pilot Project - STF Service						
Monthly Rides	0	0	N/A	0	0	N/A
Monthly Cost	\$0	\$0	N/A	\$0	\$0	N/A
Monthly Vehicle Mile	0	0	N/A	0	0	N/A
New Riders This Month	0	0	N/A	0.0	0.0	N/A
Cost per Ride	N/A	N/A	N/A	N/A	N/A	N/A
Cost per Mile	N/A	N/A	N/A	N/A	N/A	N/A
Miles per Ride	N/A	N/A	N/A	N/A	N/A	N/A
Providence Elderplace - STF Service						
Monthly Rides	3,410	0	N/A	483	862	-44.0%
Monthly Cost	\$244,909	\$0	N/A	\$23,040	\$22,985	0.2%
Monthly Vehicle Mile	27,342	0	N/A	2,606	2,732	-4.6%
New Riders This Month	24	0	N/A	5.9	3.2	86.8%
Cost per Ride	\$71.82	N/A	N/A	\$47.70	\$26.66	78.9%
Cost per Mile	\$8.96	N/A	N/A	\$8.84	\$8.41	5.1%
Miles per Ride	8.0	N/A	N/A	5.4	3.2	68.8%
Ride Together - New Freedom (Mult., Wash.)						
Monthly Rides	0	338	-100.0%	155	412	-62.4%
Monthly Cost	\$0	\$2,109	-100.0%	\$988	\$2,701	-63.4%
Monthly Vehicle Mile	0	2,055	-100.0%	1,288	3,160	-59.2%
New Riders This Month	0	0	N/A	0.4	2.0	-80.0%
Cost per Ride	N/A	\$6.24	N/A	\$6.36	\$6.56	-3.0%
Cost per Mile	N/A	\$1.03	N/A	\$0.77	\$0.85	-9.4%
Miles per Ride	N/A	6.1	N/A	8.3	7.7	7.8%
Urban League - N/NE Shuttle						
Monthly Rides	30	119	-74.8%	9	242	-96.3%
Monthly Cost	\$1,186	\$6,422	-81.5%	\$943	\$5,339	-82.3%
Monthly Vehicle Mile	212	417	-49.2%	72	1,008	-92.9%
New Riders This Month	4	0	N/A	1.1	4.8	-77.1%
Cost per Ride	\$39.53	\$53.97	-26.8%	\$103.79	\$22.08	370.1%
Cost per Mile	\$5.59	\$15.40	-63.7%	\$13.08	\$5.30	146.8%
Miles per Ride	7.1	3.5	102.9%	7.9	4.2	88.1%

INDIVIDUAL PROVIDER - PROGRAM**12-Month Averages**

Provider - Program	Mar 2021	Mar 2020	% Change	Current Year	Previous Year	% Change
Mt. Hood Express Service - Fixed Route (1)						
Monthly Rides	4,088	5,011	-18.4%	2,436	2,110	15.5%
Monthly Cost	\$82,966	\$50,201	65.3%	\$63,658	\$10,570	502.3%
Monthly Vehicle Mile	25,250	22,349	13.0%	20,105	5,789	247.3%
New Riders This Month	0	0	N/A	0.1	0.0	N/A
Cost per Ride	\$20.30	\$10.02	102.6%	\$26.14	\$5.01	421.8%
Cost per Mile	\$3.29	\$2.25	46.2%	\$3.17	\$1.83	73.2%
Miles per Ride	6.2	4.5	37.8%	8.3	2.7	207.4%

MFS-PROJECT LINKAGE - PROVIDER

12-Month Averages

Programs	Mar 2021	Mar 2020	% Change	Current Year	Previous Year	% Change
Cherry Blossom						
Monthly Rides	0	11	-100.0%	0	24	-100.0%
Monthly Cost	\$0	\$218	-100.0%	\$329	\$352	-6.5%
Monthly Vehicle Mile	0	100	-100.0%	0	118	-100.0%
New Riders This Month	0	3	-100.0%	0.0	2.1	-100.0%
Cost per Ride	N/A	\$19.79	N/A	N/A	\$14.95	N/A
Cost per Mile	N/A	\$2.18	N/A	N/A	\$2.99	N/A
Miles per Ride	N/A	9.1	N/A	N/A	5.0	N/A
Gateway Shuttle						
Monthly Rides	64	102	-37.3%	65	145	-55.2%
Monthly Cost	\$654	\$0	N/A	\$497	\$1,114	-55.4%
Monthly Vehicle Mile	118	199	-40.7%	160	194	-17.5%
New Riders This Month	3	2	50.0%	3.3	4.4	-25.0%
Cost per Ride	\$10.22	\$0.00	N/A	\$7.65	\$7.67	-0.3%
Cost per Mile	\$5.54	\$0.00	N/A	\$3.11	\$5.75	-45.9%
Miles per Ride	1.8	2.0	-10.0%	2.5	1.3	92.3%
Mid Multnomah County						
Monthly Rides	239	342	-30.1%	194	573	-66.1%
Monthly Cost	\$4,596	\$6,827	-32.7%	\$5,557	\$6,613	-16.0%
Monthly Vehicle Mile	1,031	1,080	-4.5%	826	1,759	-53.0%
New Riders This Month	0	6	-100.0%	7.3	17.1	-57.3%
Cost per Ride	\$19.23	\$19.96	-3.7%	\$28.62	\$11.55	147.8%
Cost per Mile	\$4.46	\$6.32	-29.4%	\$6.73	\$3.76	79.0%
Miles per Ride	4.3	3.2	34.4%	4.3	3.1	38.7%
Multnomah Co. ADS Premium						
Monthly Rides	0	0	N/A	0.0	0.3	-100.0%
Monthly Cost	\$0	\$0	N/A	\$0	\$2	-100.0%
Monthly Vehicle Mile	0	0	N/A	0	3	-100.0%
New Riders This Month	0	0	N/A	0.0	0.3	-100.0%
Cost per Ride	N/A	N/A	N/A	N/A	\$6.35	N/A
Cost per Mile	N/A	N/A	N/A	N/A	\$0.60	N/A
Miles per Ride	N/A	N/A	N/A	N/A	10.7	N/A
N/NE Shuttle						
Monthly Ride	1,015	644	57.6%	600	991	-39.5%
Monthly Cost	\$10,294	\$25,562	-59.7%	\$20,239	\$30,802	-34.3%
Monthly Vehicle Mile	7,668	3,630	111.2%	4,225	4,257	-0.8%
New Riders This Month	67	24	179.2%	52.5	49.2	6.7%
Cost per Ride	\$10.14	\$39.69	-74.5%	\$33.74	\$31.09	8.5%
Cost per Mile	\$1.34	\$7.04	-81.0%	\$4.79	\$7.24	-33.8%
Miles per Ride	7.6	5.6	35.7%	7.0	4.3	62.8%
STF Service						
Monthly Ride	160	266	-39.8%	236	429	-45.0%
Monthly Cost	\$17,837	\$23,786	-25.0%	\$16,983	\$13,467	26.1%
Monthly Vehicle Mile	948	1,639	-42.2%	1,594	2,166	-26.4%
New Riders This Month	8	21	-61.9%	36.9	41.0	-10.0%
Cost per Ride	\$111.48	\$89.42	24.7%	\$71.83	\$31.39	128.8%
Cost per Mile	\$18.82	\$14.51	29.7%	\$10.66	\$6.22	71.4%
Miles per Ride	5.9	6.2	-4.8%	6.7	5.0	34.0%
TriMet Service						
Monthly Ride	0	209	-100.0%	0	571	-100.0%
Monthly Cost	\$0	\$6,644	-100.0%	\$5,729	\$7,873	-27.2%
Monthly Vehicle Mile	0	1,818	-100.0%	0	3,225	-100.0%
New Riders This Month	0	16	-100.0%	0.0	41.0	-100.0%
Cost per Ride	N/A	\$31.79	N/A	N/A	\$13.80	N/A
Cost per Mile	N/A	\$3.65	N/A	N/A	\$2.44	N/A
Miles per Ride	N/A	8.7	N/A	N/A	5.7	N/A

NEIGHBORHOOD HOUSE - PROVIDER

12-Month Averages

Programs	Mar 2021	Mar 2020	% Change	Current Year	Previous Year	% Change
STF Service						
Monthly Rides	294	134	119.4%	154	294	-47.6%
Monthly Cost	\$6,792	\$8,503	-20.1%	\$8,698	\$7,941	9.5%
Monthly Vehicle Mile	1,340	680	97.1%	918	1,306	-29.7%
New Riders This Month	27	2	1250.0%	39.0	22.1	76.5%
Cost per Ride	\$23.10	\$63.45	-63.6%	\$56.36	\$27.05	108.4%
Cost per Mile	\$5.07	\$12.50	-59.4%	\$9.47	\$6.08	55.8%
Miles per Ride	4.6	5.1	-9.8%	5.9	4.4	34.1%
SW Shuttle Service						
Monthly Rides	50	55	-9.1%	24	140	-82.9%
Monthly Cost	\$1,236	\$1,695	-27.1%	\$874	\$2,147	-59.3%
Monthly Vehicle Mile	221	136	62.5%	111	344	-67.7%
New Riders This Month	0	2	-100.0%	1.4	10.0	-86.0%
Cost per Rider	\$24.71	\$30.81	-19.8%	\$36.06	\$15.37	134.6%
Cost per Mile	\$5.59	\$12.46	-55.1%	\$7.91	\$6.24	26.8%
Miles per Ride	4.4	2.5	76.0%	4.6	2.5	84.0%
Downtown RideAbout(1)						
Monthly Rides	0	0	N/A	0	0	N/A
Monthly Cost	\$0	\$0	N/A	\$0	\$0	N/A
Monthly Vehicle Mile	0	0	N/A	0	0	N/A
New Riders This Month	0	0	N/A	0.0	0.0	N/A
Cost per Ride	N/A	N/A	N/A	N/A	N/A	N/A
Cost per Mile	N/A	N/A	N/A	N/A	N/A	N/A
Miles per Ride	N/A	N/A	N/A	N/A	N/A	N/A

IMPACT NORTHWEST - PROVIDER
12-Month Averages

Programs	Mar 2021	Mar 2020	% Change	Current Year	Previous Year	% Change
Cherry Blossom						
Monthly Rides	21	26	-19.2%	95	29	227.6%
Monthly Cost	\$3,210	\$6,528	-50.8%	\$6,601	\$758	770.8%
Monthly Vehicle Mile	112	40	180.0%	576	18	3100.0%
New Riders This Month	0	0	N/A	14.3	0.1	17100.0%
Cost per Ride	\$152.86	\$251.06	-39.1%	\$69.79	\$25.93	169.1%
Cost per Mile	\$28.66	\$163.19	-82.4%	\$11.46	\$42.73	-73.2%
Miles per Ride	5.3	1.5	246.7%	6.1	0.6	916.7%
Multnomah Co. ADS Premium						
Monthly Rides	0	0	N/A	0	0.6	-100.0%
Monthly Cost	\$0	\$0	N/A	\$0	\$4	-100.0%
Monthly Vehicle Mile	0	0	N/A	0	5	-100.0%
New Riders This Month	0	0	N/A	0.0	0.4	-100.0%
Cost per Ride	N/A	N/A	N/A	N/A	\$6.35	N/A
Cost per Mile	N/A	N/A	N/A	N/A	\$0.75	N/A
Miles per Ride	N/A	N/A	N/A	N/A	8.4	N/A
STF Discretionary						
Monthly Rides	120	430	-72.1%	208	620	-66.5%
Monthly Cost	\$6,232	\$9,427	-33.9%	\$7,729	\$12,418	-37.8%
Monthly Vehicle Mile	353	2,039	-82.7%	625	2,062	-69.7%
New Riders This Month	0	30	-100.0%	19.1	27.0	-29.3%
Cost per Ride	\$51.93	\$21.92	136.9%	\$37.14	\$20.05	85.2%
Cost per Mile	\$17.65	\$4.62	282.0%	\$12.36	\$6.02	105.3%
Miles per Ride	2.9	4.7	-38.3%	3.0	3.3	-9.1%
STF Service						
Monthly Rides	427	299	42.8%	424	426	-0.5%
Monthly Cost	\$7,032	\$6,888	2.1%	\$5,358	\$8,715	-38.5%
Monthly Vehicle Mile	634	762	-16.8%	781	1,314	-40.6%
New Riders This Month	0	11	-100.0%	33.8	20.9	61.7%
Cost per Ride	\$16.47	\$23.04	-28.5%	\$12.65	\$20.46	-38.2%
Cost per Mile	\$11.09	\$9.04	22.7%	\$6.86	\$6.63	3.5%
Miles per Ride	1.5	2.5	-40.0%	1.8	3.1	-41.9%
Dialysis (NEW)						
Monthly Rides	0	0	N/A	0		
Monthly Cost	\$0	\$0	N/A	\$0		
Monthly Vehicle Mile	0	0	N/A	0		
New Riders This Month	0	0	N/A	0		
Cost per Ride	N/A	N/A	N/A	N/A		
Cost per Mile	N/A	N/A	N/A	N/A		
Miles per Ride	N/A	N/A	N/A	N/A		
Title XIX Non Medical (NEW)						
Monthly Rides	75	0	N/A	20		
Monthly Cost	\$1,234	\$0	N/A	\$435		
Monthly Vehicle Mile	324	0	N/A	137		
New Riders This Month	0	0	N/A	2		
Cost per Ride	\$16.45	N/A	N/A	\$22.19		
Cost per Mile	\$3.81	N/A	N/A	\$3.18		
Miles per Ride	4.3	N/A	N/A	7.0		

RIDE CONNECTION HEADQUARTER OFFICE - PROVIDER				12-Month Averages		
Programs	Mar 2021	Mar 2020	% Change	Current Year	Previous Year	% Change

Programs	Mar 2021	Mar 2020	% Change	Current Year	Previous Year	% Change
----------	----------	----------	----------	--------------	---------------	----------

Multnomah Co. ADS Premium						
Monthly Ride	0	3	-100.0%	0.1	1.7	-94.1%
Monthly Cost	\$0	\$85	-100.0%	\$5	\$64	-92.2%
Monthly Vehicle Mile	0	23	-100.0%	1	16	-93.8%
New Riders This Month	0	0	N/A	0.1	0.6	-83.3%
Cost per Ride	N/A	\$28.33	N/A	\$62.92	\$38.55	63.2%
Cost per Mile	N/A	\$3.70	N/A	\$6.99	\$4.02	73.9%
Miles per Ride	N/A	7.7	N/A	9.0	9.6	-6.3%

STF Service						
Monthly Ride	265	216	22.7%	183	225	-18.0%
Monthly Cost	\$2,888	\$9,779	-70.5%	\$6,454	\$10,461	-38.3%
Monthly Vehicle Mile	1,480	1,288	14.9%	1,115	1,238	-9.9%
New Riders This Month	31	28	10.7%	33	46	-28.3%
Cost per Ride	\$10.90	\$45.27	-75.9%	\$35.23	\$46.56	-24.3%
Cost per Mile	\$1.95	\$7.59	-74.3%	\$5.79	\$8.45	-31.5%
Miles per Ride	5.6	6.0	-6.7%	6.1	5.5	10.9%

Title XIX Non Medical						
Monthly Ride	0	5	-100.0%	0.1	0.5	-80.0%
Monthly Cost	\$0	\$0	N/A	\$0	\$8	-100.0%
Monthly Vehicle Mile	0	29	-100.0%	1	4	-75.0%
New Riders This Month	0	2	-100.0%	0.0	0.3	-100.0%
Cost per Ride	N/A	\$0.0	N/A	\$0.00	\$15.32	-100.0%
Cost per Mile	N/A	\$0.0	N/A	\$0.00	\$1.88	-100.0%
Miles per Ride	N/A	5.8	N/A	9.0	8.2	9.8%

Downtown RideAbout						
Monthly Ride	123	259	-52.5%	114	197	-42.1%
Monthly Cost	\$0	\$1,547	-100.0%	\$1,263	\$2,078	-39.2%
Monthly Vehicle Mile	157	189	-16.9%	145	153	-5.2%
New Riders This Month	0	4	-100.0%	4	6	-33.3%
Cost per Ride	\$0.00	\$5.97	-100.0%	\$11.06	\$10.53	5.0%
Cost per Mile	\$0.00	\$8.18	-100.0%	\$8.74	\$13.56	-35.5%
Miles per Ride	1.3	0.7	85.7%	1.3	0.8	62.5%

RIDE CONNECTION WASHINGTON CO. OFFICE - PROVIDER
12-Month Averages

Programs	Mar 2021	Mar 2020	% Change	Current Year	Previous Year	% Change
General Public						
Monthly Ride	1	77	-98.7%	25	128	-80.5%
Monthly Cost	\$83	\$4,706	-98.2%	\$2,084	\$5,491	-62.0%
Monthly Vehicle Mile	15	885	-98.3%	474	1,054	-55.0%
New Riders This Month	1	1	0.0%	1	4	-75.0%
Cost per Ride	\$82.90	\$61.12	35.6%	\$82.01	\$42.84	91.4%
Cost per Mile	\$5.53	\$5.32	3.9%	\$4.40	\$5.21	-15.5%
Miles per Ride	15.0	11.5	30.4%	18.6	8.2	126.8%
Job Access						
Monthly Rides	0	0	N/A	0	0	N/A
Monthly Cost	\$0	\$0	N/A	\$0	\$0	N/A
Monthly Vehicle Mile	0	0	N/A	0	0	N/A
New Riders This Month	0	0	N/A	0	0	N/A
Cost per Ride	N/A	N/A	N/A	N/A	N/A	N/A
Cost per Mile	N/A	N/A	N/A	N/A	N/A	N/A
Miles per Ride	N/A	N/A	N/A	N/A	N/A	N/A
STF Service						
Monthly Rides	25	287	-91.3%	66	540	-87.8%
Monthly Cost	\$1,004	\$8,426	-88.1%	\$2,954	\$9,780	-69.8%
Monthly Vehicle Mile	191	2,094	-90.9%	618	3,249	-81.0%
New Riders This Month	5	20	-75.0%	11	21	-47.6%
Cost per Ride	\$40.15	\$29.36	36.8%	\$44.99	\$18.10	148.6%
Cost per Mile	\$5.26	\$4.02	30.8%	\$4.78	\$3.01	58.8%
Miles per Ride	7.6	7.3	4.1%	9.4	6.0	56.7%
Title XIX Non Medical						
Monthly Rides	0	9	-100.0%	0.2	17.3	-98.8%
Monthly Cost	\$0	\$391	-100.0%	\$15	\$613	-97.6%
Monthly Vehicle Mile	0	115	-100.0%	2	128	-98.4%
New Riders This Month	0	2	-100.0%	0.1	2.7	-96.3%
Cost per Ride	N/A	\$43.44	N/A	\$88.56	\$35.37	150.4%
Cost per Mile	N/A	\$3.40	N/A	\$7.08	\$4.79	47.8%
Miles per Ride	N/A	12.8	N/A	12.5	7.4	68.9%
Veterans Volunteers						
Monthly Rides	0	117	-100.0%	34	174	-80.5%
Monthly Cost	\$0	\$39	-100.0%	\$477	\$1,519	-68.6%
Monthly Vehicle Mile	0	1,831	-100.0%	512	2,369	-78.4%
New Riders This Month	0	4	-100.0%	1	6	-83.3%
Cost per Ride	N/A	\$0.33	N/A	\$0.93	\$8.72	62.2%
Cost per Mile	N/A	\$0.02	N/A	\$14.14	\$0.64	45.3%
Miles per Ride	N/A	15.6	N/A	15.2	13.6	11.8%
Wa Co DAVS						
Monthly Rides	0	1	-100.0%	50	5	900.0%
Monthly Cost	\$0	\$57	-100.0%	\$1,192	\$196	508.2%
Monthly Vehicle Mile	0	9	-100.0%	178	40	345.0%
New Riders This Month	0	0	N/A	3.4	0.8	325.0%
Cost per Ride	N/A	\$56.52	N/A	\$23.80	\$37.91	-37.2%
Cost per Mile	N/A	\$6.28	N/A	\$6.71	\$4.86	38.1%
Miles per Ride	N/A	9.0	N/A	3.5	7.8	-55.1%

VEHICLE ONLY - PROGRAM 12-Month Averages

Providers	Mar 2021	Mar 2020	% Change	Current Year	Previous Year	% Change
Albertina Kerr-(Mult.)						
Monthly Rides	0	0	N/A	0	0	N/A
Monthly Cost	\$0	\$0	N/A	\$0	\$0	N/A
Monthly Vehicle Mile	0	0	N/A	0	0	N/A
New Riders This Month	0	0	N/A	0.0	0.0	N/A
Cost per Ride	N/A	N/A	N/A	N/A	N/A	N/A
Cost per Mile	N/A	N/A	N/A	N/A	N/A	N/A
Miles per Ride	N/A	N/A	N/A	N/A	N/A	N/A
American Cancer Society-(Clack., Mult., Wash.)						
Monthly Rides	0	0	N/A	0	3	-100.0%
Monthly Cost	\$0	\$0	N/A	\$0	\$76	-100.0%
Monthly Vehicle Mile	0	0	N/A	0	18	-100.0%
New Riders This Month	0	0	N/A	0.0	0.0	N/A
Cost per Ride	N/A	N/A	N/A	N/A	\$30.33	N/A
Cost per Mile	N/A	N/A	N/A	N/A	\$4.33	N/A
Miles per Ride	N/A	N/A	N/A	N/A	7.0	N/A
Edwards Center-(Clack., Wash.)						
Monthly Rides	0	0	N/A	0	524	-100.0%
Monthly Cost	\$0	\$0	N/A	\$0	\$1,087	-100.0%
Monthly Vehicle Mile	0	0	N/A	0	508	-100.0%
New Riders This Month	0	0	N/A	0.0	6.8	-100.0%
Cost per Ride	N/A	N/A	N/A	N/A	\$2.07	N/A
Cost per Mile	N/A	N/A	N/A	N/A	\$2.14	N/A
Miles per Ride	N/A	N/A	N/A	N/A	1.0	N/A
Maryville Nursing Home						
Monthly Rides	0	0	N/A	0	0	N/A
Monthly Cost	\$0	\$0	N/A	\$0	\$0	N/A
Monthly Vehicle Mile	0	0	N/A	0	0	N/A
New Riders This Month	0	0	N/A	0.0	0.0	N/A
Cost per Ride	N/A	N/A	N/A	N/A	N/A	N/A
Cost per Mile	N/A	N/A	N/A	N/A	N/A	N/A
Miles per Ride	N/A	N/A	N/A	N/A	N/A	N/A

VEHICLE ONLY - PROGRAM

12-Month Averages

Providers	Mar 2021	Mar 2020	% Change	Current Year	Previous Year	% Change
Michael's Place						
Monthly Rides	0	0	N/A	0	0	N/A
Monthly Cost	\$0	\$0	N/A	\$0	\$0	N/A
Monthly Vehicle Mile	0	0	N/A	0	0	N/A
New Rider This Month	0	0	N/A	0.0	0.0	N/A
Cost per Ride	N/A	N/A	N/A	N/A	N/A	N/A
Cost per Mile	N/A	N/A	N/A	N/A	N/A	N/A
Miles per Ride	N/A	N/A	N/A	N/A	N/A	N/A
Providence Elderplace						
Monthly Rides	0	5,167	-100.0%	1,995	8,977	-77.8%
Monthly Cost	\$0	\$251,457	-100.0%	\$189,777	\$252,367	-24.8%
Monthly Vehicle Mile	0	23,497	-100.0%	14,725	27,996	-47.4%
New Riders This Month	0	34	-100.0%	151.1	157.3	-3.9%
Cost per Ride	N/A	\$48.67	N/A	\$95.13	\$28.11	238.4%
Cost per Mile	N/A	\$10.70	N/A	\$12.89	\$9.01	43.1%
Miles per Ride	N/A	4.5	N/A	7.4	3.1	138.7%
Tualatin Valley Workshop						
Monthly Rides	0	0	N/A	95	160	-40.6%
Monthly Cost	\$0	\$0	N/A	\$1,328	\$1,494	-11.1%
Monthly Vehicle Mile	0	0	N/A	801	378	111.9%
New Riders This Month	0	0	N/A	6.0	2.8	111.8%
Cost per Ride	N/A	N/A	N/A	\$14.02	\$9.34	50.1%
Cost per Mile	N/A	N/A	N/A	\$1.66	\$3.95	-58.0%
Miles per Ride	N/A	N/A	N/A	8.5	2.4	254.2%
West Linn						
Monthly Ride	0	0	N/A	0	0	N/A
Monthly Cost	\$0	\$0	N/A	\$0	\$0	N/A
Monthly Vehicle Mile	0	0	N/A	0	0	N/A
New Riders This Month	0	0	N/A	0.0	0.0	N/A
Cost per Ride	N/A	N/A	N/A	N/A	N/A	N/A
Cost per Mile	N/A	N/A	N/A	N/A	N/A	N/A
Miles per Ride	N/A	N/A	N/A	N/A	N/A	N/A

Rural Transit District Transportation Report

12-Month Averages

Rural Cities	Mar 2021	Mar 2020	% Change	Current Year	Previous Year	% Change
Canby(CAT)-Fixed Route						
Monthly Rides	4,498	4,768	-5.7%	3,779	6,091	-38.0%
Monthly Cost	\$55,312	\$51,136	8.2%	\$50,088	\$53,041	-5.6%
Monthly Vehicle Miles	18,518	17,633	5.0%	16,885	17,896	-5.6%
On-Time Performance	99.3%	100.0%	-0.7%	99.8%	99.5%	0.3%
Cost per Ride	\$12.30	\$10.72	14.7%	\$13.25	\$8.71	52.1%
Cost per Mile	\$2.99	\$2.90	3.1%	\$2.97	\$2.96	0.3%
Miles per Roadcall	18,518	17,633	5.0%	16,885	17,896	-5.7%
Canby(CAT)-Paratransit LIFT and Cab						
Monthly Rides	783	757	3.4%	503	1,295	-61.2%
Monthly Cost	\$28,467	\$24,478	16.3%	\$18,805	\$30,307	-38.0%
Monthly Vehicle Miles	4,473	3,979	12.4%	2,726	5,879	-53.6%
On-Time Performance	97.0%	96.0%	1.0%	96.8%	91.7%	5.1%
Cost per Ride	\$36.36	\$32.34	12.4%	\$37.37	\$23.40	59.7%
Cost per Mile	\$6.36	\$6.15	3.4%	\$6.90	\$5.15	34.0%
Miles per Roadcall	4,473	3,979	12.4%	2,726	5,879	-53.6%
Molalla(SCTD)-Deviated Fixed Route						
Monthly Rides	2,982	3,092	-3.6%	2,452	6,740	-63.6%
Monthly Cost	\$70,607	\$63,430	11.3%	\$66,311	\$57,680	15.0%
Monthly Vehicle Miles	25,870	28,017	-7.7%	26,272	22,954	14.5%
On-Time Performance	0.0%	0.0%	0.0%	0.0%	72.6%	-72.6%
Cost per Ride	\$23.68	\$20.51	15.5%	\$27.04	\$8.56	215.9%
Cost per Mile	\$2.73	\$2.26	20.8%	\$2.52	\$2.51	0.4%
Miles per Roadcall	25,870	28,017	-7.7%	26,272	22,954	14.5%
Sandy(SAM)-Fixed Route						
Monthly Rides	6,220	6,896	-9.8%	5,333	9,458	-43.6%
Monthly Cost	\$65,000	\$65,000	0.0%	\$65,000	\$65,000	0.0%
Monthly Vehicle Miles	24,164	21,917	10.3%	22,056	23,175	-4.8%
On-Time Performance	97.0%	97.0%	0.0%	95.6%	96.1%	-0.5%
Cost per Ride	\$10.45	\$9.43	10.8%	\$12.19	\$6.87	77.4%
Cost per Mile	\$2.69	\$2.97	-9.4%	\$2.95	\$2.80	5.4%
Miles per Roadcall	24,164	21,917	10.3%	22,056	23,175	-4.8%
Sandy(SAM)-Paratransit LIFT and Cab						
Monthly Rides	906	787	15.1%	722	1,121	-35.6%
Monthly Cost	\$20,000	\$20,000	0.0%	\$23,750	\$20,000	18.8%
Monthly Vehicle Miles	6,019	4,595	31.0%	4,795	6,682	-28.2%
On-Time Performance	100.0%	96.5%	3.5%	93.4%	94.3%	-0.9%
Cost per Ride	\$22.08	\$25.41	-13.1%	\$32.91	\$17.84	84.5%
Cost per Mile	\$3.32	\$4.35	-23.7%	\$4.95	\$2.99	65.6%
Miles per Roadcall	6,019	4,595	31.0%	4,795	6,682	-28.2%
Wilsonville(SMART)-Fixed Route						
Monthly Rides	9,754	16,461	-40.7%	7,902	23,468	-66.3%
Monthly Cost	\$224,284	\$261,637	-14.3%	\$290,010	\$340,808	-14.9%
Monthly Vehicle Miles	50,648	48,467	4.5%	44,979	45,482	-1.1%
On-Time Performance	0.0%	0.0%	0.0%	0.0%	0.0%	0.0%
Cost per Ride	\$22.99	\$15.89	44.7%	\$36.70	\$14.52	152.8%
Cost per Mile	\$4.43	\$5.40	-18.0%	\$6.45	\$7.49	-13.9%
Miles per Roadcall	50,648	48,467	4.5%	44,979	45,482	-1.1%
Wilsonville(SMART)-Paratransit LIFT and Cab						
Monthly Rides	630	706	-10.8%	475	1,416	-66.5%
Monthly Cost	\$39,580	\$46,171	-14.3%	\$51,178	\$60,144	-14.9%
Monthly Vehicle Miles	3,626	2,870	26.3%	2,277	5,186	-56.1%
On-Time Performance	0.0%	0.0%	0.0%	0.0%	0.0%	0.0%
Cost per Ride	\$62.83	\$65.40	-3.9%	\$107.64	\$42.47	153.4%
Cost per Mile	\$10.92	\$16.09	-32.1%	\$22.48	\$11.60	93.8%
Miles per Roadcall	3,626	2,870	26.3%	2,277	5,186	-56.1%