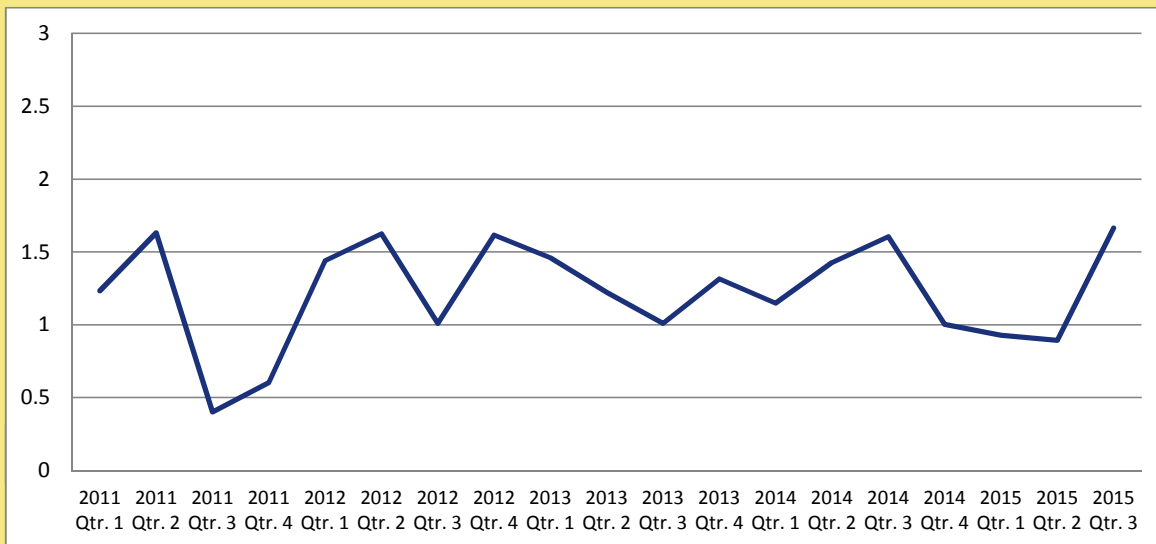


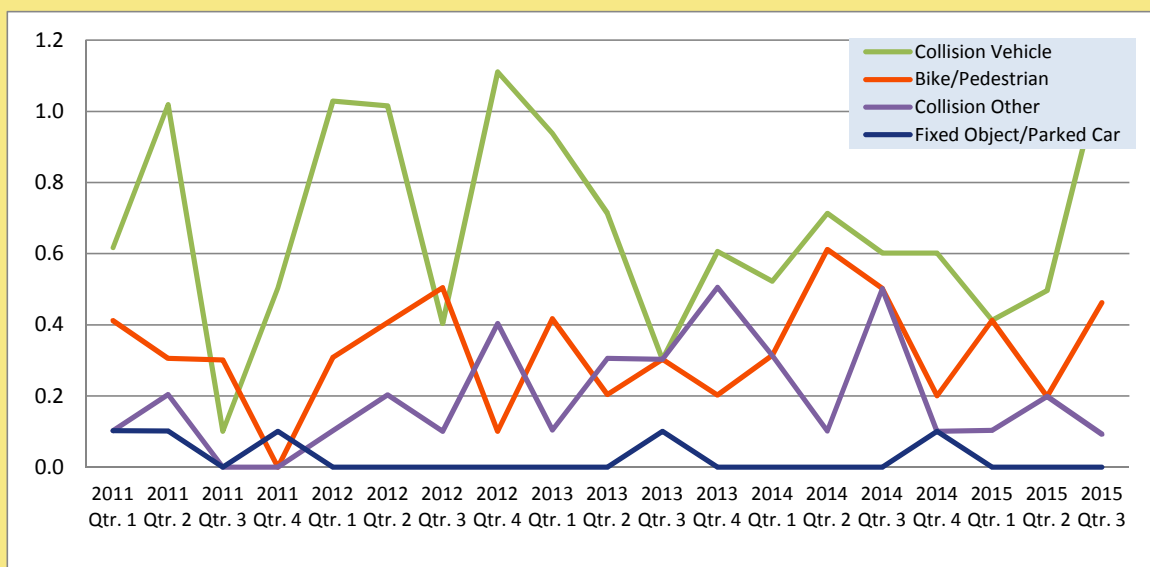
MAX Light Rail Collisions Per 100,000 Miles

	<u>2015 Qtr. 3</u>	<u>2015 Qtr. 2</u>	<u>2014 Qtr. 3</u>	<u>2015 - 2014</u> <u>Percent Change</u>
Total	1.67	0.89	1.61	3.7%
Collision Vehicle	1.11	0.50	0.60	84.4%
Fixed Object/Parked Car	-	-	-	0.0%
Bike/Pedestrian	0.46	0.20	0.50	-7.8%
Collision Other	0.09	0.20	0.50	-81.6%

MAX Light Rail Collisions Per 100,000 Miles



MAX Collision Types Per 100,000 Boarding Rides

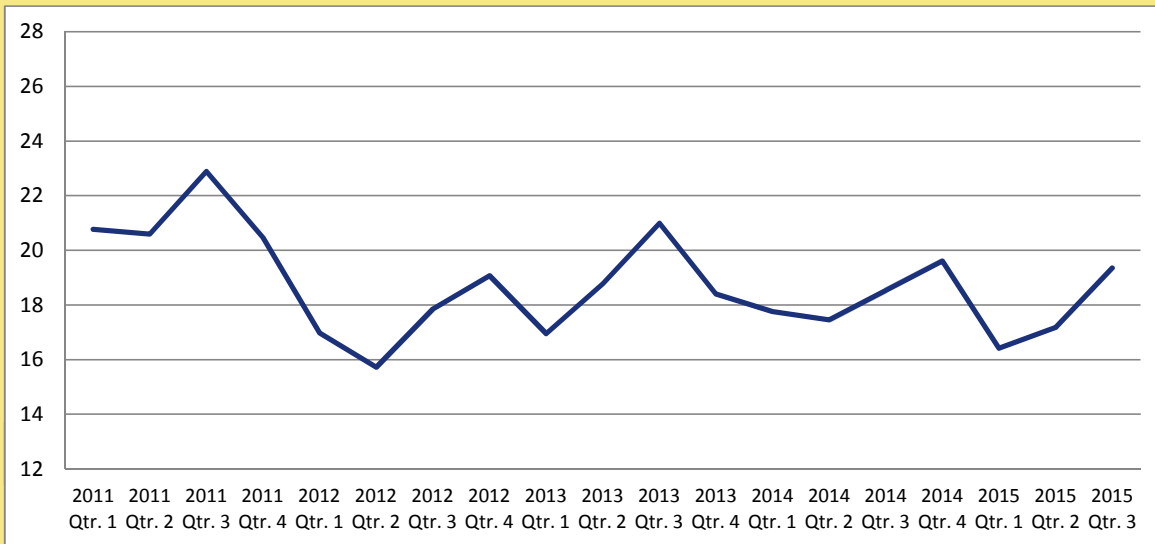


MAX Light Rail

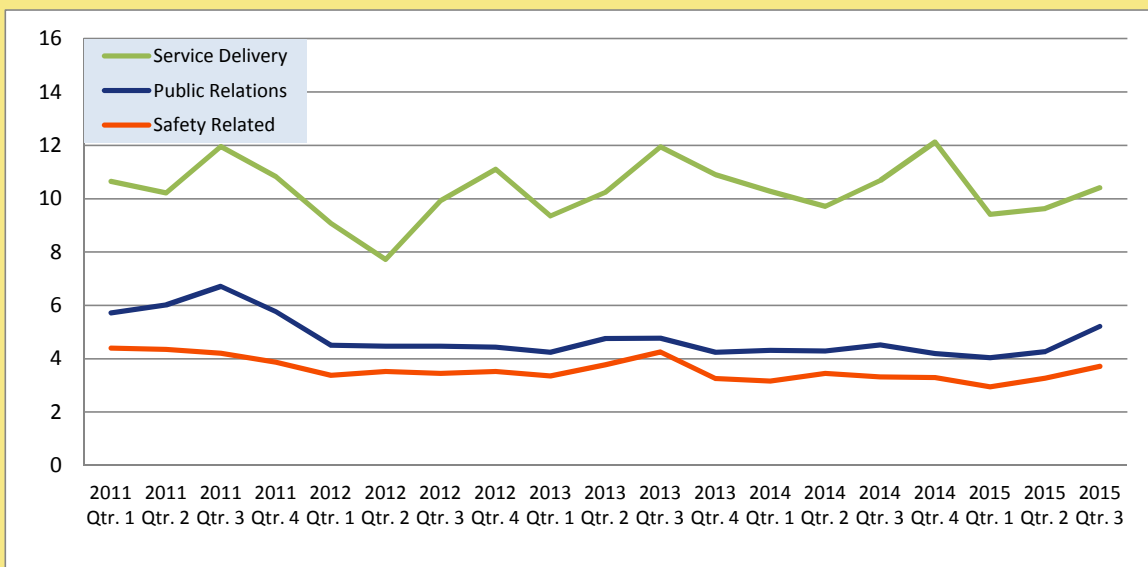
Fixed Route Bus Complaints Per 100,000 Boarding Rides

	<u>2015 Qtr. 3</u>	<u>2015 Qtr. 2</u>	<u>2014 Qtr. 3</u>	<u>2015 - 2014</u> <u>Percent Change</u>
Total	19.4	17.2	18.5	4.5%
Service Delivery	10.4	9.6	10.7	-2.5%
Public Relations	5.2	4.3	4.5	15.4%
Safety Related	3.7	3.3	3.3	11.9%

Total Operator Complaints Per 100,000 Boarding Rides



Type of Operator Complaints Per 100,000 Boarding Rides

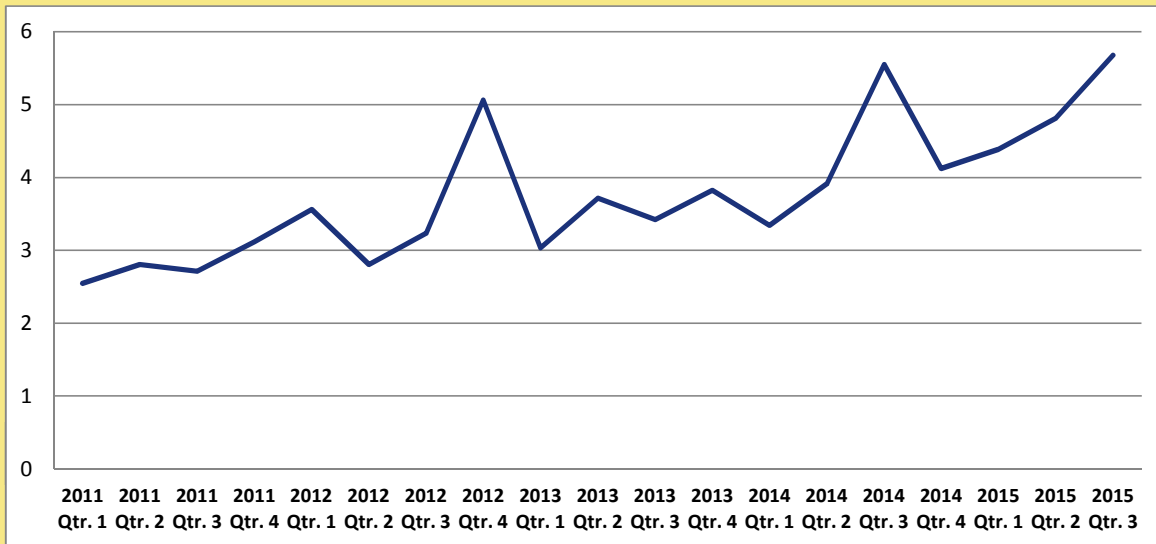


Fixed Route Bus

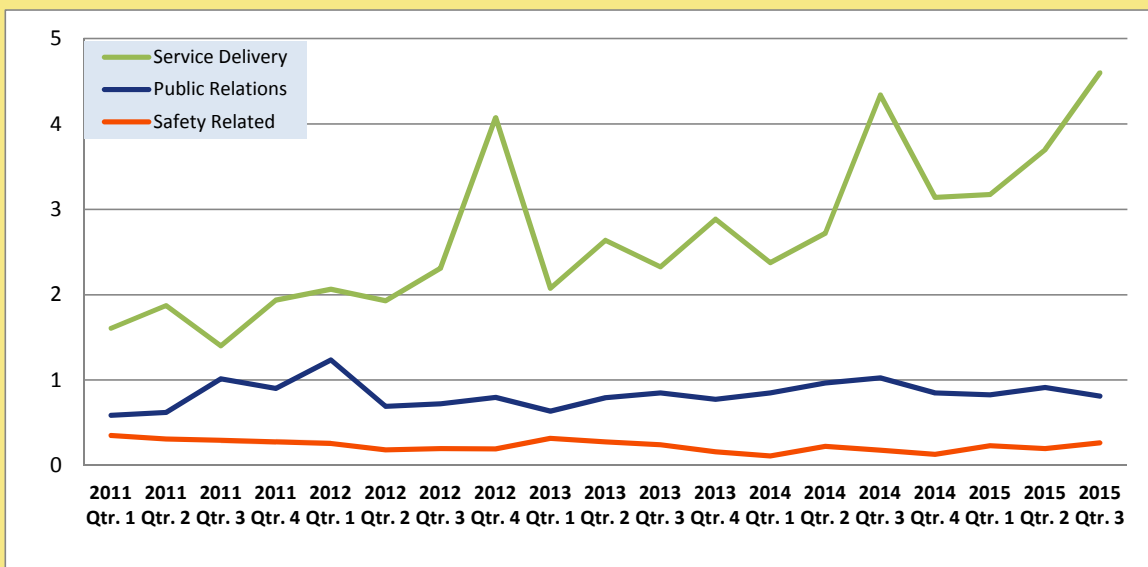
MAX Light Rail Complaints Per 100,000 Boarding Rides

	<u>2015 Qtr. 3</u>	<u>2015 Qtr. 2</u>	<u>2014 Qtr. 3</u>	<u>2015 - 2014</u> <u>Percent Change</u>
Total	5.7	4.8	5.5	2.4%
Service Delivery	4.6	3.7	4.3	6.0%
Public Relations	0.8	0.9	1.0	-20.7%
Safety Related	0.3	0.2	0.2	46.0%

Total Operator Complaints Per 100,000 Boarding Rides



Type of Operator Complaints Per 100,000 Boarding Rides

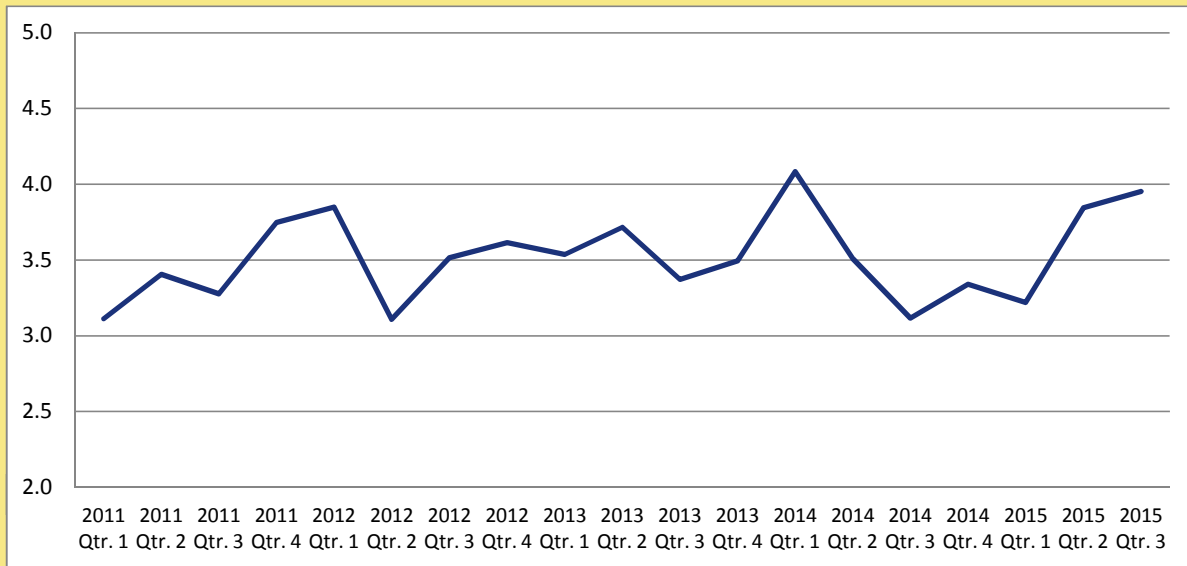


MAX Light Rail

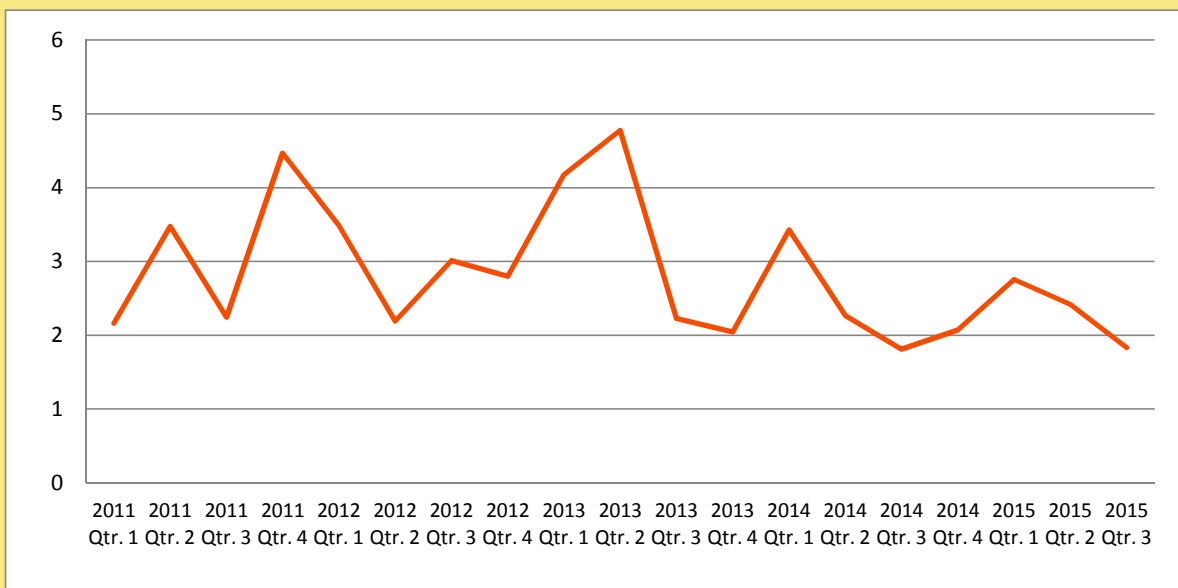
Fixed Route Bus and MAX Light Rail Commendations

	<u>2015 Qtr. 3</u>	<u>2015 Qtr. 2</u>	<u>2014 Qtr. 3</u>	<u>2015 - 2014 Percent Change</u>
Fixed Route Bus Per 100,000 Boardings	4.0	3.8	3.1	26.9%
MAX Light Rail Per Million Boardings	1.8	2.4	1.8	1.1%

Total Bus Operator Commendations Per 100,000 Boarding Rides



Total MAX Light Rail Commendations Per Million Boarding Rides



TriMet Bus and MAX Commendations